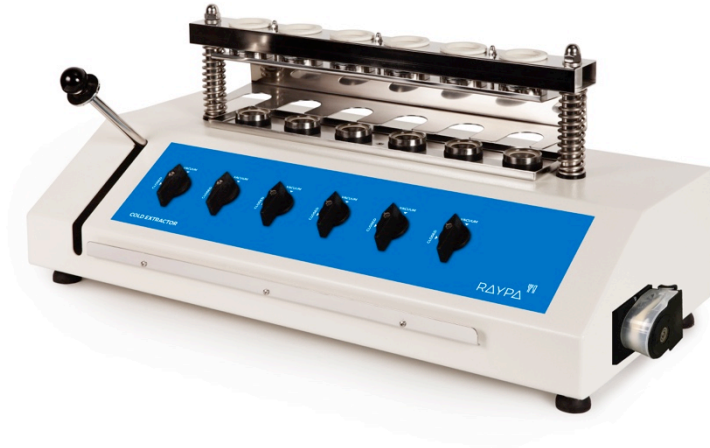


Cold fat extraction system

EF-6P



Intended use

- Designed for cold fat extraction with acetone or other solvents, of 6 samples simultaneous.
- Preliminary defeating before hot fibre extraction of samples with more than 1% fat content.
- Ideal for use in combination with the RAYPA Manual fibre determination system F-6P.

Features

- System for 6 simultaneous samples.
- Case made of stainless steel AISI 304 painted with epoxy resin.

Components supplied with the equipment

- 6 glass crucibles, ref. CR-P2.
- Handling support, ref. 70221
- Test tube crucibles rack, ref. 70222
- Tube GSR $\varnothing 6 \times \varnothing 9$

Pressure contribution

- EF-6P has a peristaltic pump that provides the necessary conditions for filtering.

EF-6P

Technical data

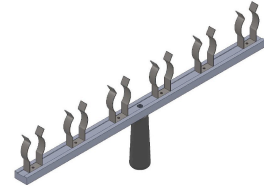
Referencia Reference Référence	L x D x H mm	W	Frecuencia Frequency Fréquence	Kg
EF-6P	724 x 380 x 323	30	50/60 Hz	15

Accessories included

Ref.	Description
CR-P2	Crucible porosity P-2



Ref.	Description
70221	Crucible handler



Ref.	Description
70222	Crucible transport stand

